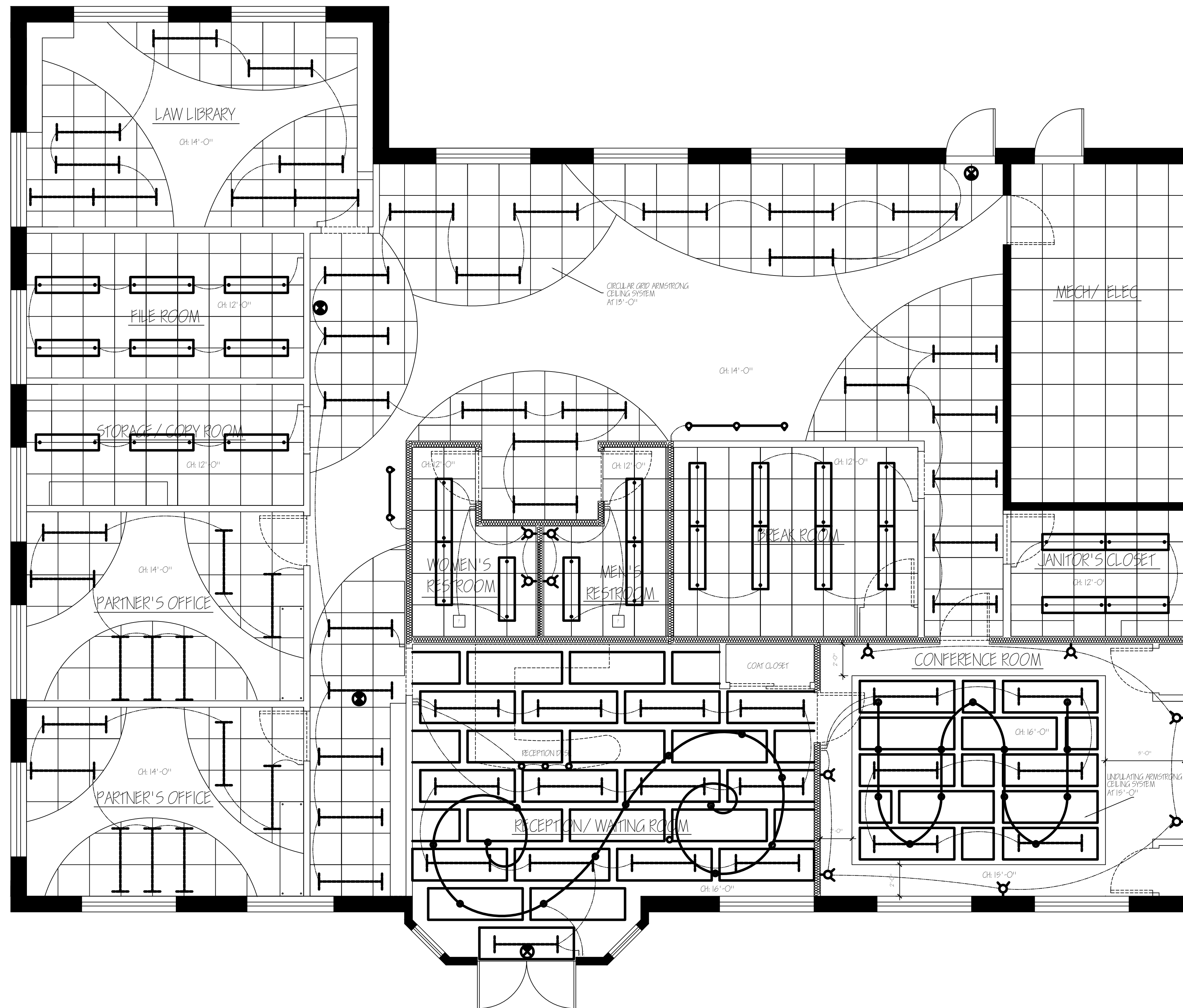


GENERAL NOTES

1. All interior walls are 3 5/8" metal studs with 5/8" Type X gypsum board each side. Use water resistant "green face" gypsum board for walls at wet areas.
2. All doors are side swinging, 3'-0" wide x 6'-8" high unless otherwise noted.
3. All door jams are 4" unless otherwise noted.
4. All walls shall have wood blocking reinforcement at handicap grab bar locations and wall mounted cabinets.
5. Window sill heights are 2'-8" AFF.
6. Exterior walls and exterior entrance doors are existing. All other areas are new construction.
7. Sprinkler system designed and installed by others.



LIGHTING LEGEND	
	SUSPENDED STRIP LIGHTING: CIRCLE 40P-1112-526-4" (1) FACT/285/WW, 5200 LUMENS, EFFICIENCY 66.2% TEST REPORT #5209.0
	4" STRIP LIGHTING: SNF-19419-UNV-EBN ELECTRONIC BALLAST, P5415/ B59 LAMPS, 4400 LUMENS, EFFICIENCY 94.6% TEST REPORT: 122P12, LER= P5-67
	EXIT LIGHT: EDGE-LIT UNIVERSAL EXITS, SELF POWERED, SINGLE OR DOUBLE FACE, LED LAMPS
	WALL SCONCE: 622 ARM MOUNT LUMINOUS CYLINDER, INC/ 1/40, 347V 1, PC- POLISHED CHROME
	SPAN ACCENT FOR TRACK SYSTEM: H250N CLASSIC LOW VOLTAGE PENDANT, SOFT CONE, 90W MR16 / T4 FLEXIBLE TRACK SYSTEM: LF60AH 120V FEED WITH STEM/ CANOPY
	PENDANT FOR TRACK SYSTEM: LV20216 SPAN, 90W MR16 ACCENT
	SPAN ACCENT FOR TRACK SYSTEM: H250N CLASSIC LOW VOLTAGE PENDANT, SOFT CONE, 90W MR16 / T4 FLEXIBLE TRACK SYSTEM: LF60AH 120V FEED WITH STEM/ CANOPY
	SINGLE POLE SWITCH
	DIMMER SWITCH
	3-WAY SWITCH
ALL ARMSTRONG INSULATING SPECIALTY CEILING SYSTEMS HANG AT 19'-0"	
ALL ARMSTRONG CIRCULAR GRID SPECIALTY CEILING SYSTEMS HANG AT 19'-0"	

WALL LEGEND	
	= EXISTING WALLS
	= NEW WALLS

WILLIS LAW FIRM		
SCALE: 1/4" = 1'-0"	DRAWN BY: B. SCHWARZ	
DATE: SPRING 2011		
IDES 4750 INTRO TO COMMERCIAL		
Reflected Ceiling Plan	SHEET: E-1	